


Load Data



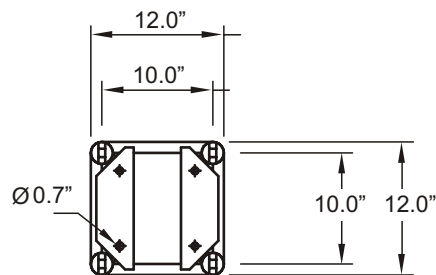
| span (ft) | Uniform Loads | | | Center Pt. Load | | Third Pt. Load | | Quarter Pt. Load | |
|--------------|---------------|---------------|--------------|-----------------|--------------|----------------|--------------|------------------|--------------|
| | load (plf) | load (lbs) | defl (in) | load (lbs) | defl (in) | load (lbs) | defl (in) | load (lbs) | defl (in) |
| 5 | 729 | 3646 | 0.014 | 1243 | 0.008 | 622 | 0.007 | 615 | 0.009 |
| 10 | 362 | 3621 | 0.111 | 1218 | 0.060 | 609 | 0.052 | 606 | 0.071 |
| 15 | 240 | 3595 | 0.375 | 1192 | 0.203 | 596 | 0.174 | 598 | 0.240 |
| 20 | 145 | 2902 | 0.727 | 1167 | 0.476 | 583 | 0.410 | 589 | 0.567 |
| 25 | 91 | 2276 | 1.136 | 1138 | 0.921 | 571 | 0.795 | 569 | 1.082 |
| 30 | 62 | 1850 | 1.636 | 925 | 1.334 | 558 | 1.367 | 462 | 1.56 |
| 35 | 44 | 1538 | 2.227 | 769 | 1.828 | 545 | 2.159 | 385 | 2.127 |
| 40 | 24 | 950 | 2.235 | 475 | 1.867 | 356 | 2.276 | 238 | 2.143 |
| 45 | 13 | 581 | 2.235 | 291 | 1.915 | 218 | 2.271 | 145 | 2.155 |
| 50 | 7 | 336 | 2.235 | 168 | 1.981 | 126 | 2.264 | 84 | 2.172 |

Component Weights

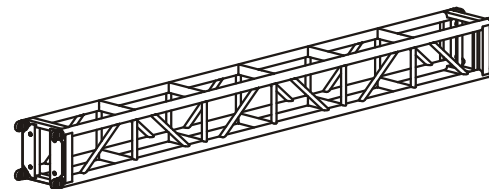
| Part No | Description | WT (lbs) |
|---------|--------------|----------|
| O8LD10 | 10ft section | 86 |
| O8LD8 | 8ft section | 75 |
| O8MD5 | 5ft section | 64 |
| O8LD3M | 3m section | 86 |
| O8LD2M | 2m section | 69 |
| O8LD1M | 1m section | 51 |



Dimensions



3d view



Truss Features

Description

- External Dimensions
- Connection Centers
- Material Type
- Connector Type
- Maximum Certified Span
- Notes

Specification

- 12"w. x 12"h.
- 10"w. x 10"h.
- 6061-T6 Aluminum
- OMNI Connectors
- 50ft
- Also available in 12" x 18" wide format