


Load Data



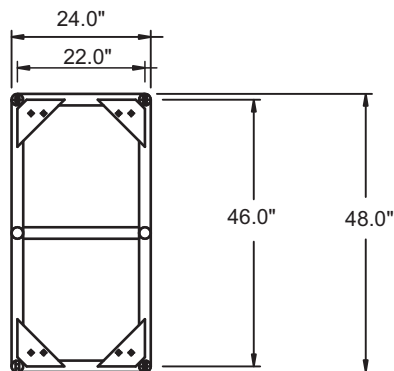
span (ft)	Uniform Loads			Center Pt. Load		Third Pt. Load		Quarter Pt. Load	
	load (plf)	load (lbs)	defl (in)	load (lbs)	defl (in)	load (lbs)	defl (in)	load (lbs)	defl (in)
10	1849	18493	0.018	9611	0.015	4806	0.013	5779	0.022
20	917	18331	0.147	9450	0.122	4725	0.104	5725	0.174
30	501	15021	0.413	7511	0.333	4644	0.35	3755	0.393
40	275	10983	0.734	5492	0.595	4119	0.749	2746	0.699
50	170	8496	1.147	4248	0.937	3186	1.17	2124	1.094
60	113	6784	1.651	3392	1.362	2544	1.683	1696	1.579
70	79	5515	2.248	2757	1.875	2068	2.289	1379	2.154
80	42	3367	2.352	1683	2.012	1263	2.39	842	2.267
90	20	1818	2.352	909	2.091	682	2.381	455	2.287
100	8	770	2.352	385	2.2	289	2.369	193	2.314

Component Weights

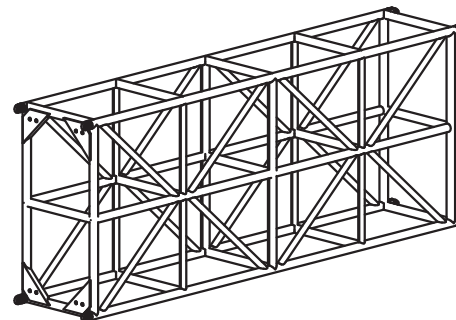
Part No	Description	WT (lbs)
O16XHD10	10ft section	203
O16XHD8	8ft section	193
O16XHD5	5ft section	134
O16XHD3M	3m section	207
O16XHD2M	2m section	183
O16XHD1M	1m section	124



Dimensions



3d view



Truss Features

Description	Specification
■ External Dimensions	■ 24"w. x 48"h.
■ Connection Centers	■ 22"w. x 46"h.
■ Material Type	■ 6061-T6 Aluminum
■ Connector Type	■ OMNI Connectors
■ Maximum Certified Span	■ 100ft