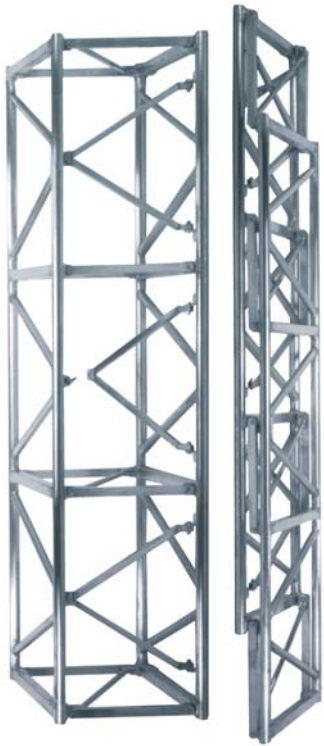


Fold Flat Medium Duty Truss



Component Weights

| Part No | Description | WT (lbs) |
|---------|----------------------|----------|
| FFT3M | 3m section | 112 |
| FFT2M | 2m section | 84 |
| FFT1M | 1m section | 56 |
| FFTC4 | 4 way corner section | 88 |
| FFTS4N | 4 way sleeve section | 96 |

Load Data

| span (ft) | Uniform Loads | | | Center Pt. Load | | Third Pt. Load | | Quarter Pt. Load | |
|-----------|---------------|------------|-----------|-----------------|-----------|----------------|-----------|------------------|-----------|
| | load (plf) | load (lbs) | defl (in) | load (lbs) | defl (in) | load (lbs) | defl (in) | load (lbs) | defl (in) |
| 10 | 615 | 6153 | 0.038 | 4793 | 0.047 | 2396 | 0.04 | 2051 | 0.048 |
| 20 | 303 | 6060 | 0.305 | 4583 | 0.367 | 2350 | 0.322 | 2020 | 0.383 |
| 30 | 199 | 5955 | 1.026 | 2978 | 0.83 | 2233 | 1.048 | 1489 | 0.977 |
| 40 | 108 | 4303 | 1.825 | 2151 | 1.489 | 1614 | 1.862 | 1076 | 1.741 |
| 50 | 65 | 3274 | 2.851 | 1637 | 2.352 | 1228 | 2.907 | 819 | 2.727 |
| 60 | 43 | 2557 | 4.106 | 1278 | 3.433 | 959 | 4.181 | 639 | 3.938 |
| 70 | 19 | 1323 | 4.136 | 662 | 3.582 | 496 | 4.197 | 331 | 3.997 |
| 80 | 7 | 577 | 4.136 | 288 | 3.775 | 216 | 4.176 | 144 | 4.046 |

Truss Features

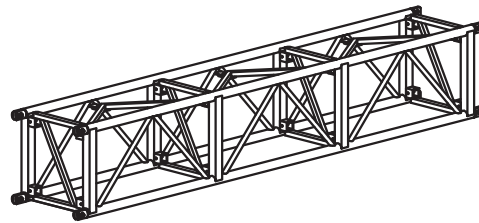
Description

- External Dimensions
- Connection Centers
- Material Type
- Connector Type
- Maximum Certified Span

Specification

- 20-1/2"w. x 20-1/2"h.
- 18-1/2"w. x 18-1/2"h.
- 6061-T6 Aluminum
- Steel fork ends
- 80ft

3d view



Dimensions

